

New Product



TREDs Traction help



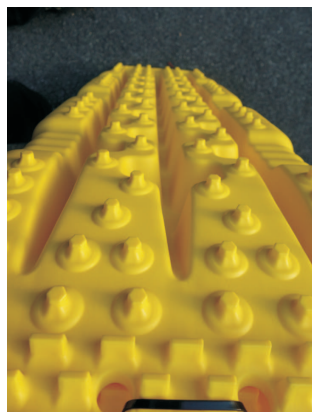
The TREDs traction aid and sand ladders are a must for every off-roader, which moves away from the main routes. In sand, snow and mud that stuck vehicle with 2TREDs is rapidly brought back on solid ground. In various operations be worth even 4 TREDs.

The TREDs be brought with the wedge shape with the studs upwards below the driven wheels. In lighter wheel rotation's draws TREDs under the wheel, and thus raises the vehicle. The gained benefit momentum and drive as far as sure. The TREDs are conditionally suitable for building bridges, as these do not break immediately and almost take for relief again the same shape as when new. This is always an emergency scenario; best help is achieved when two TREDs be connected with straps in the same situation. Action4x4 was in our test with us and has confirmed that the other plastic traction aids do not show the same good results as the TREDs. Also for TREDs applies: these are not designed to build bridges, but sometimes a cost / benefit analysis must be made in emergencies. The TREDs suitable by the design for blades. Mounting openings facilitate the mounting on the vehicle. For transportation transport bags are available.

Dimensions: 1100x320x60mm, 6.2kg

Order numbers:

black: 867TRED11BK,
yellow: 867TRED11YTJM
Carrying Bag: 867TREDBAG11



Modification of information at any time without notice

Distributor: